



Art

Painting & Mixed Media-
Light & Dark

Year 4

Spring

Elements of art

Colour

Form

Tone

Key Vocabulary

Composition	Putting different elements together in a pleasing way
Hue	Describing an exact colour e.g. sky blue; dark green; rose pink
Proportion	How big a part of something looks compared to the rest of it
Shade	A colour, especially with regard to how light or dark it is In art, adding black to a colour creates a shade
Shadow	An apparent dark area created when light is blocked
Still life	An artwork showing a collection of things that don't move e.g. objects rather than people
Tint	A shade or variety of a colour. In art, adding white to a colour creates tint
Tone	how light or dark something is In art, adding grey to a colour creates tone

Key Knowledge

Colour: Adding black to a colour creates a shade
Adding white to a colour creates tone
Form: Using lighter and darker tints and shades of a colour can create a 3D effect
Tone: Using lighter and darker tints and shades of a colour can create a 3D effect
Tone can be used to create contrast in an artwork

Artists

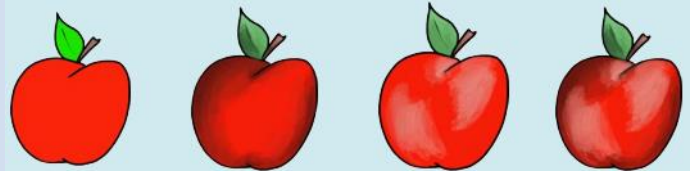
Juan Sanchez Cotan



Fernando Botero

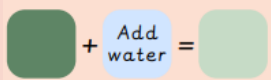


Using tints and shades can help a painted object appear three dimensional



Making colours lighter
adding white/a lighter
colour/water

Making colours darker
adding black/a darker
colour



Painting Techniques



Dabbing



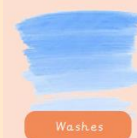
Stippling



Pointillism



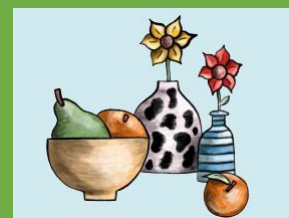
Adding texture to paint



Washes



Using different tools



Still life



Portrait



Landscape

Creating contrast



Contrasting texture



Contrasting colours